



Eliminating Barriers to Nursing Degrees

Kayla Banks, PhD, RN, NEA-BC
Chancellor, Methodist College
RED Talk Presenter



**American
Nurses**
Enterprise



2026 Opportunity & Impact in Nursing Summit





Opportunities

- Traveler spend
- *Premium pay & over-time*
- *Recruitment costs*
- *CMS pass through*
- *College operating losses*



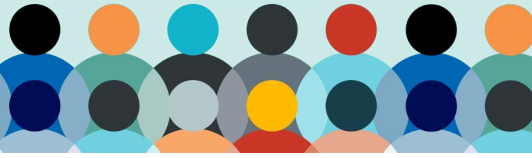


“Only those who dare to fail greatly can ever achieve greatly.”

– Robert F. Kennedy



2026 Opportunity & Impact in Nursing Summit



2026 Opportunity & Impact in Nursing Summit

METRIC	SOURCE	Frequency	BASELINE	PERFORMANCE
Student participant graduation rate	MC DIR	May, December	73%	100%
Student participant retention rate	MC DIR	September	82%	
TM participant retention rate through commitment period	HR	Annual	No Data	
All student to TM conversion rate	HR	May, December	40%	62%
TM participant tenure	HR	Annual	No Data	
Nurse traveler utilization rate	HR	Annual	9.2%	
Premium pay & traveler cost savings	HR	May, December	\$0	
Bad Debt	Treasury	Annual	No Data	
MC financial performance	MC Finance	May	(\$1,660,247)	
Financial performance against pro forma	Treasury	Annual	No Data	

Measuring our Impact





Deepening
our Impact



2026 Opportunity & Impact in Nursing Summit



Kayla Banks, PhD, RN, NEA- BC
Chancellor, Methodist College
kbanks@methodistcol.edu



American
Nurses
Enterprise